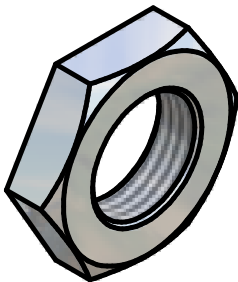
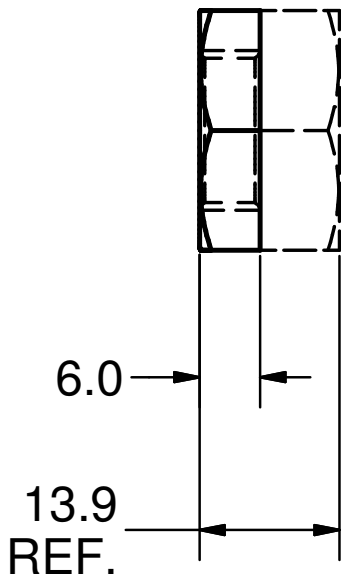
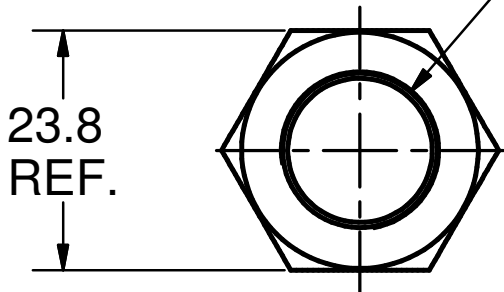




5/8-18 UNF  
REF.



NOTES:

1. MAKE FROM 5/8-18 HEX NUT. 316 STAINLESS  
STEEL. (McMASTER CARR'S NO. 94804A355)

Issued all design changes as Rev C (TIO) - 4/19/07 - SAB

										Rev. C	
								Scale : 1:1		mat: See Note 1	
								ASSEMBLY : 75 kW CW Input Coupler			
					Date	Name		DESIGNATION :  5/8-18 LOCK NUT			
				Drawn	10/5/04	Churanov					
				Checked	08-06-05	VM					
				Standard							
								100.700.008			
State	Changes	Date	Name								

